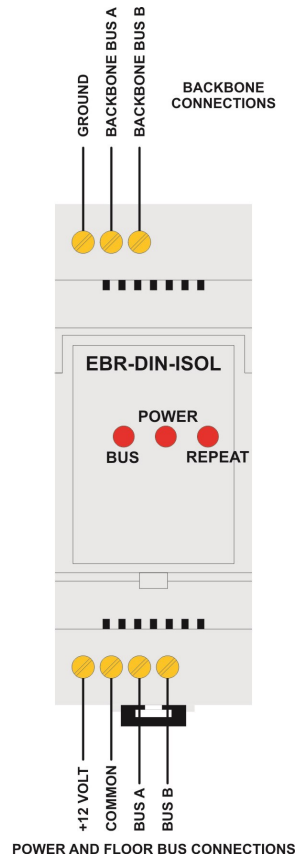
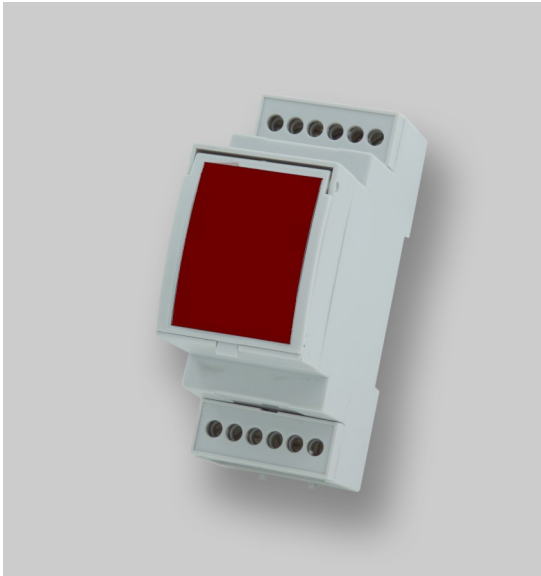


EBR-DIN-ISOL

RAPID Isolated Backbone Controller

Overview



The Rapid Lighting Control System area controller comprises a number of DIN rail mounted control modules powered by one or more power supply modules (EBR-DIN-PSU).

The EBR-DIN-ISOL module is used to connect floors together using a backbone. The module has circuitry to electrically isolate the backbone from the floor: the main purpose being that if a floor was to have a serious fault condition, typically live being applied to the bus, damage would not propagate to the rest of the building.

Three LEDs are visible through the front window to show power on and to indicate bus activity.

Installation and Wiring

- Install the module in a suitable housing. This unit is compatible with standard DIN rail enclosures.
- Wire as in the diagram opposite. Note that three cores are required for the backbone connections.
- A full system diagram can be found overleaf.

Commissioning

Commissioning will normally be performed by our trained commissioning engineers.

Please note that prior to commissioning, it is the responsibility of the installing contractor to ensure the following:

- The area control box must be installed and connected
- Mains power must be available
- Bus connections to the floor and backbone must be installed and checked

The module should be set up using our infrared programming handset or computer front end as part of the system commissioning. For programming details see the separate programming document.

Note: to accept a programming command from the programming handset, the internal push switch must be pressed first.

Specification

SUPPLY VOLTAGE 12VDC
TERMINAL CAPACITY 1.5mm²
MATERIAL Flame retardant polycarbonate
TEMPERATURE -10°C to 35°C
CONFORMITY EMC-2014/30/EU
 LVD-2014/35/EU

For further compliance information visit www.cpelectronics.co.uk/compliance

Part Numbers

EBR-DIN-ISOL Isolated backbone controller

IMPORTANT NOTICE!

This device should be installed by a qualified electrician in accordance with the latest edition of the IEE wiring regulations.



C.P. Electronics Ltd
 Brent Crescent
 London
 NW10 7XR
 United Kingdom
 Tel: + 44 (0) 333 900 0671
 Fax: + 44 (0) 333 900 0674
www.cpelectronics.co.uk
enquiry@cpelectronics.co.uk

